

Sterling Bank's CRA Assessment Area

Includes all of Barron and Polk Counties and a
portion of Burnett County

Census Tracts in Assessment Area

State	MSA	County	Census Tract
55	99999	5	1
55	99999	5	2
55	99999	5	3
55	99999	5	4
55	99999	5	5
55	99999	5	6
55	99999	5	8
55	99999	5	9
55	99999	5	10.01
55	99999	5	10.02
55	99999	13	9710
55	99999	95	9601
55	99999	95	9602
55	99999	95	9603
55	99999	95	9605
55	99999	95	9606
55	99999	95	9607
55	99999	95	9608
55	99999	95	9609
55	99999	95	9610
55	99999	95	9611

Listing of Towns and Cities in Assessment Area

Almena

Amery

Balsam Lake

Barron

Bloomer

Cameron

Centuria

Chetek

Cumberland

Cushing

Dallas

Frederic

Haugen

Hillsdale

Luck

Milltown

New Auburn

Osceola

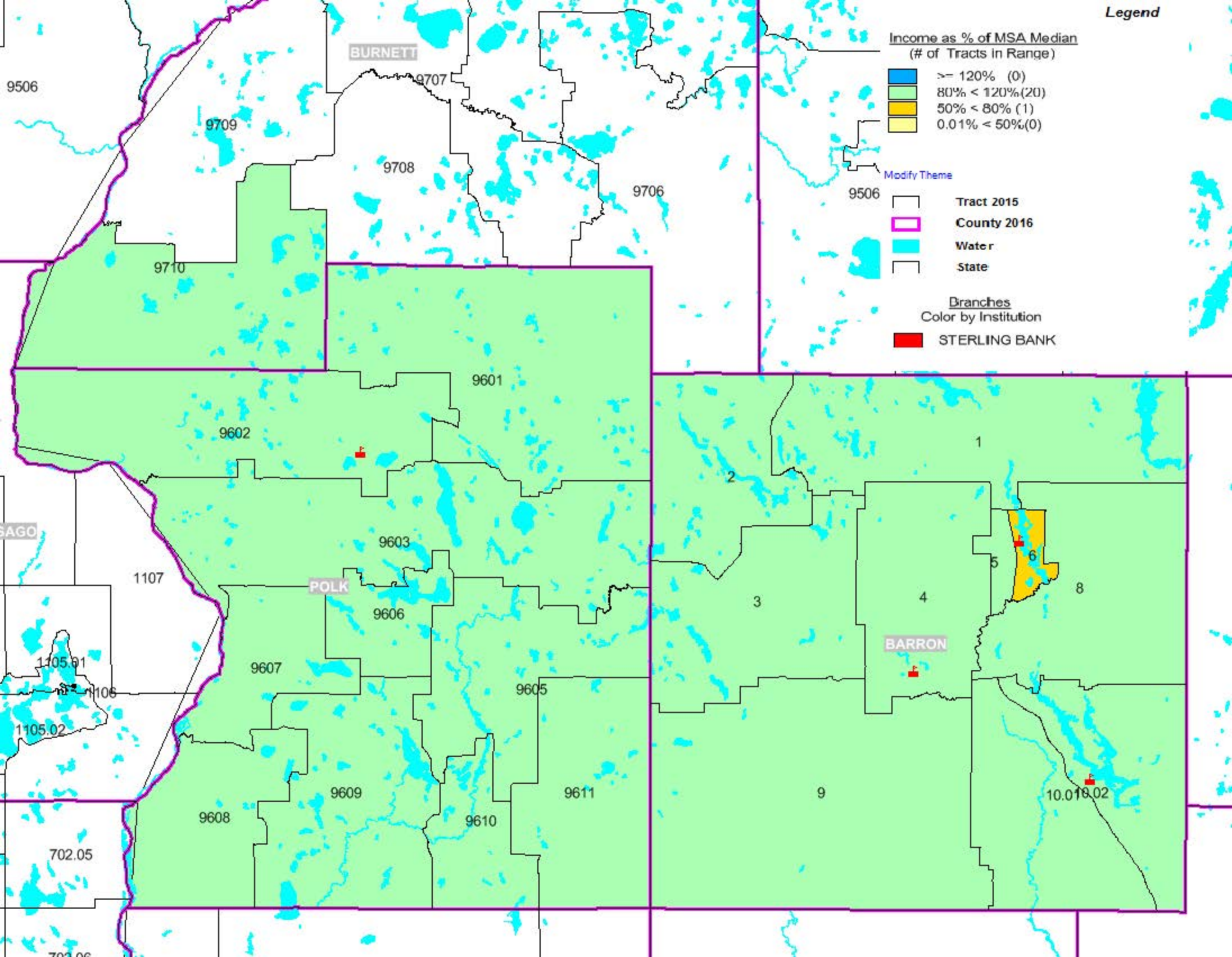
Prairie Farm

Rice Lake

Ridgeland

St. Croix Falls

Turtle Lake



BURNETT

POLK

BARRON

9506

9709

9707

9708

9706

9710

9601

9602

9603

1107

9606

9607

9605

9609

9608

9610

9611

702.05

2

1

3

4

5

8

10.018.02

9

702.06